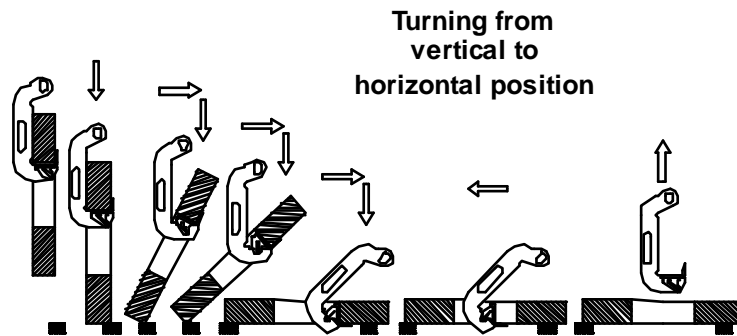


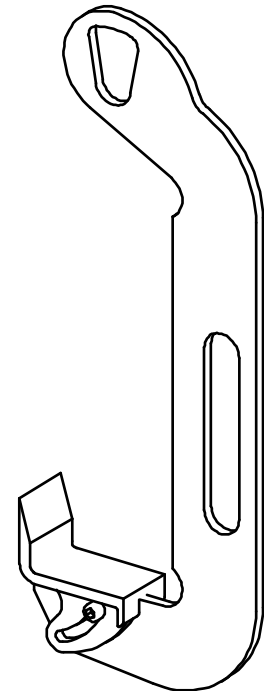
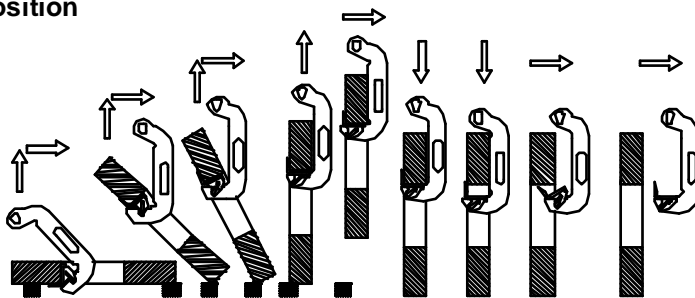
Applications

Lifting of coils and/ or turning over from the horizontal to the vertical position and vice versa.



Turning from
vertical to
horizontal position

Turning from
horizontal to vertical
position



Description

These accessories are fitted with a swivel shoe, locked during transport and therefore securing it which also permits the load progressive and regular turning. An operating handle makes the positioning easier.

Functioning

Turning: locate the shoe into the coil central hole thanks to the operating handle. Lift both C-hook and coil by moving the lifting means. The articulated shoe ensures a progressive turning and completes the lifting means movement. Once the coil has been set down, take out the C-hook thanks to the handle.

Lifting: locate the shoe inside the coil central hole thanks to the handle and perform lifting. The shoe locks itself, thus allowing the safe transport of the load.

Important instructions

- Check the condition of the shoe and its axle on a regular basis.
- Any coil to be turned over should be first placed on shims to allow shoe positioning.
- Working temperature: -20° to +100°C.

General characteristics

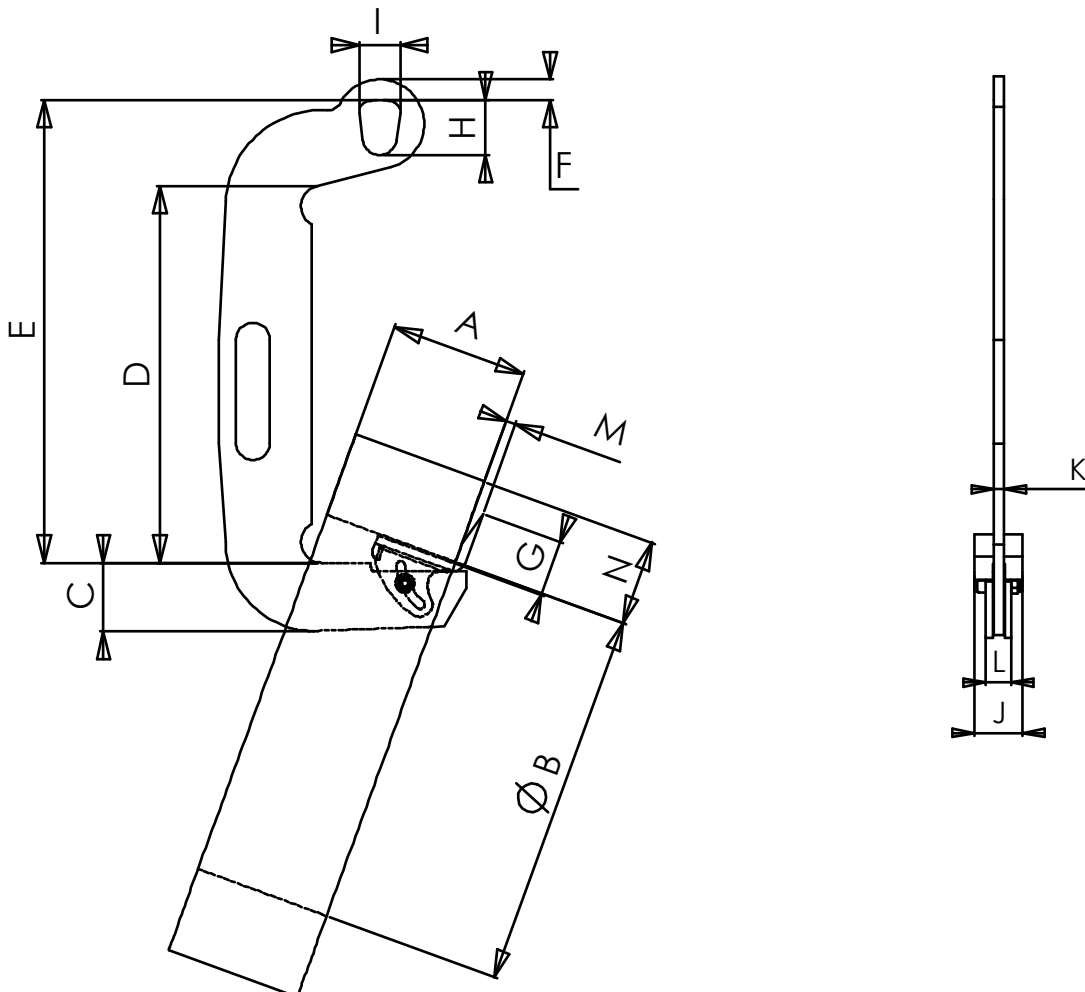
- Manufactured without load bearing welds.
- Hot epoxy coating.
- Safety factor: 3 in accordance with the EN 13155.2003 nom.
- Product conforms to the French regulation, in particular the decree of 01/03/2004 relating to the check on lifting devices and the European Directive n°98/37.
- Product with EC marking and delivered with a declaration of conformity and instructions for use.

Dimensional characteristics

Ref.	Group code	WLL kg	A		Ø B min	C	D	E	F	G	H	I	J	K	L	M	N	Shim min H	Weight kg
			min	max															
CR05 50-120	50078	500	50	120	400	75	400	520	15	65	70	50	60	10	33	11	375	50	5,5
CR1 70-140	50088	1 000	70	140	450	100	400	520	20	82	70	50	70	12	34	14	390	60	9
CR2 100-200	50098	2 000	100	200	550	100	550	675	30	82	80	60	70	15	37	14	530	60	16
CR2 160-330	50108	2 000	160	330	600	100	600	725	30	82	80	60	70	25	47	14	525	60	31

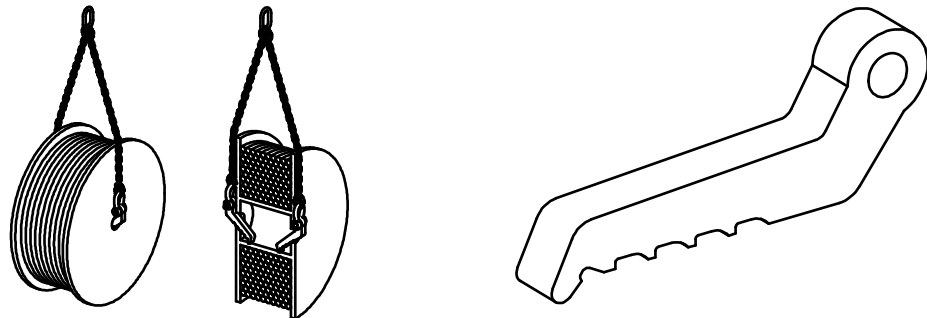
Dimensions in mm

WARNING ! (A, B, N) load dimensions limits are to be considered individually as impossibility to operate. Handling safety is not guaranteed even though the load dimensions are included within the set limits ; other factors, particularly proportion, mass, adherence to the floor are to be taken into account.



Applications

Cable drum lifting.



Description

These accessories are adapted to many cable drums*. They fit holes with diameters from 55 to 83 mm. Shackles and slings not provided.

* ABN/ BBN/ CBN/ DBN/ EBN/ FBN/ GBN/ HBN/ IBN type following NF B 55-007 French standard.

Functioning

Once both shackles and 2-legged cable/ chain/ textile slings have been put together with the hooks, insert them either side of the cable drum axle, teeth downwards. Lifting ensures the hooks' locking in position.

Important instructions

- The hooks and cable drums' bearing surface must be free from grease or oil.
- Insert hooks in the right direction, ie. teeth downwards.
- Working temperature: -20° to +100°C.

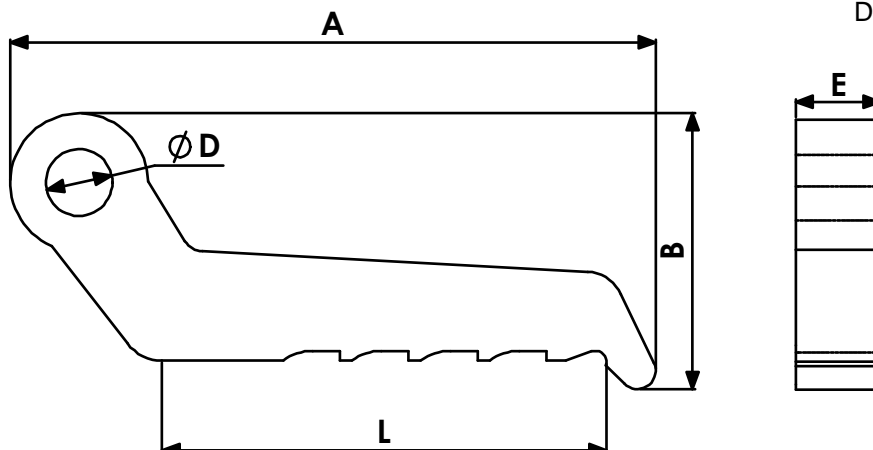
General characteristics

- Manufactured without load bearing welds.
- Hot epoxy coating.
- Safety factor: 3 in accordance with the EN 13155.2003 nom.
- Product conforms to the French regulation, in particular the decree of 01/03/2004 relating to the check on lifting devices and the European Directive n°98/37.
- Product with EC marking and delivered with a declaration of conformity and instructions for use.

Dimensional characteristics

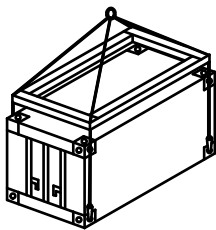
Ref.	Group code	WLL/ pair kg	A	B	D	E	L	Weight/ pair kg
TO13	51198	13 000	265	112	27	35	180	6

Dimensions in mm

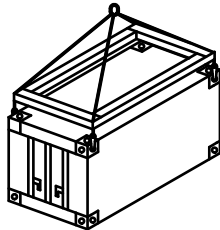


Applications

Lifting of containers by their standard ISO corners.



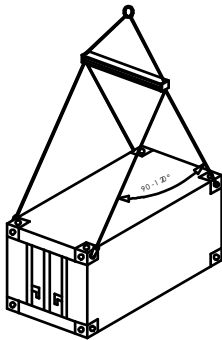
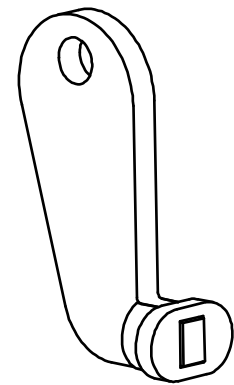
CCV



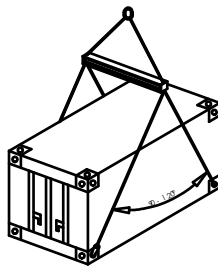
CC7.5 B



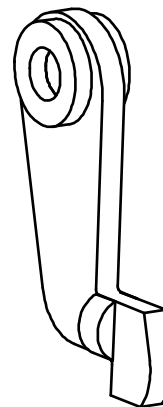
CC7.5V



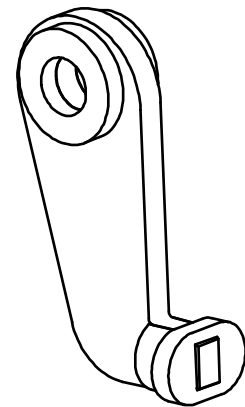
CCB



CC12.5 B



CC12.5 V



Description

2 models:
 CCB: container lifted by the top or bottom, slantwise traction.
 CCV: container lifted by the top or bottom, vertical traction.
 Slings not provided.

Functioning

CCB: lifting with a single lifting beam and two 2-legged slings.
 CCV: lifting with a spreader frame and 4 slings.

Important instructions

- Capacity of CCB model is specified on axle direction of the hook. Weight of container which can be lifted depends on sling angle.
- Do not use container lugs meant for slantwise traction (CCB) to pull vertically and vice versa.
- CCB container lugs for slantwise traction: adhere to a sling angle included between 90 and 120°.
- Working temperature: -20° to +100°C.

Subjected to technical modification without notice - Non contractual document.

General characteristics

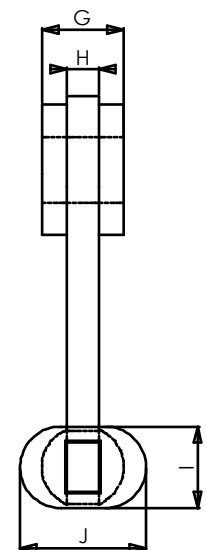
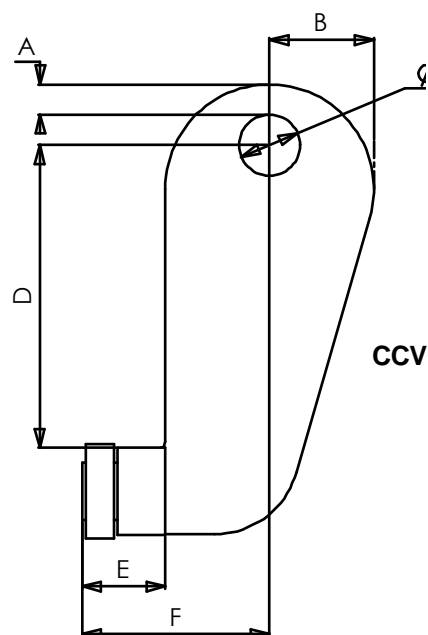
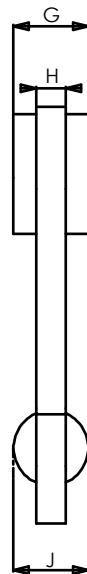
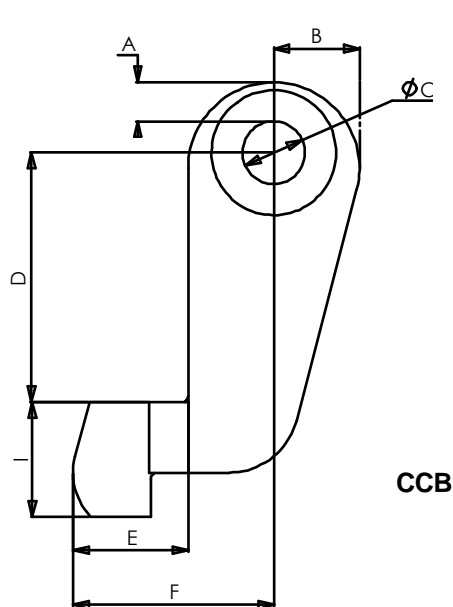
- Manufactured without load bearing welds.
- Hot epoxy coating.
- Safety factor: 3 in accordance with the EN 13155.2003 nom.
- Product conforms to the French regulation, in particular the decree of 01/03/2004 relating to the check on lifting devices and the European Directive n°98/37.
- Product with EC marking and delivered with a declaration of conformity and instructions for use.

Dimensional characteristics

Ref.	Group code	WLL/ 4 kg	Traction	A	B	C	D	E	F	G	H	I	J	Weight/ 4 kg
CCV7,5	50038	30 000	vertical	16	55	32	160	44	99	X	20	50	77	16
CCV12,5	50048	50 000		25	55	40	160	44	99	50	20	50	77	20
CCB7,5	50058	30 000*	slantwise	16	55	32	145	64	119	X	20	72	50	14
CCB12,5	50068	50 000*		25	55	40	160	74	129	50	20	73	50	20

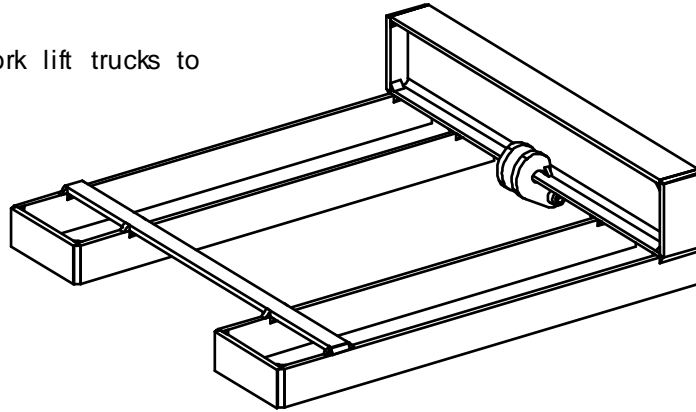
* **IMPORTANT** : control real capacity considering sling angle

Dimensions in mm



Applications

Provides an hanging point on fork lift trucks to handle loads.

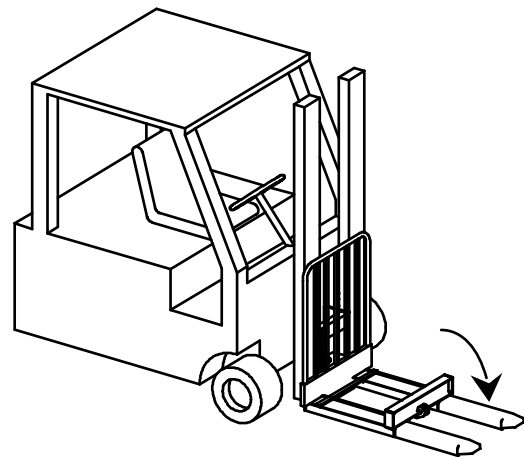
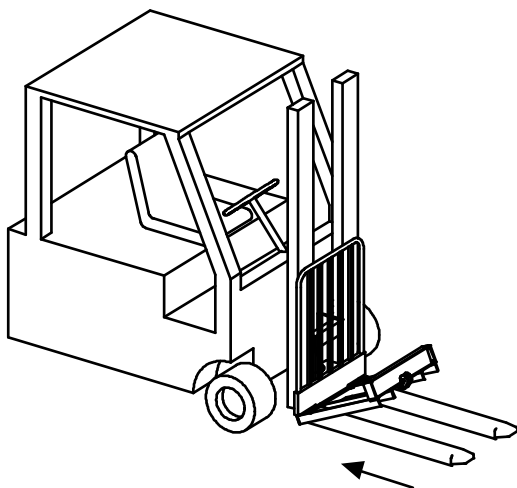


Description

These accessories are fitted with an immobilizing system on the fork lift truck tines ensuring that lifting operations are performed safely.

Functioning

Position the fork lift truck tines to about 50 cm from the floor and check their spacing. Fit the adaptator onto the tines (hanging point downwards) and butt it against the tines' vertical uprights. The adaptator is then immobilized.



Important instructions

- Ensure the adaptator is correctly driven home against the fork lift truck's tines.
- If Tractel Solutions does not provide the hook, ensure its WLL is the same as the adaptator one.
- Working temperature: -20° to +100°C.

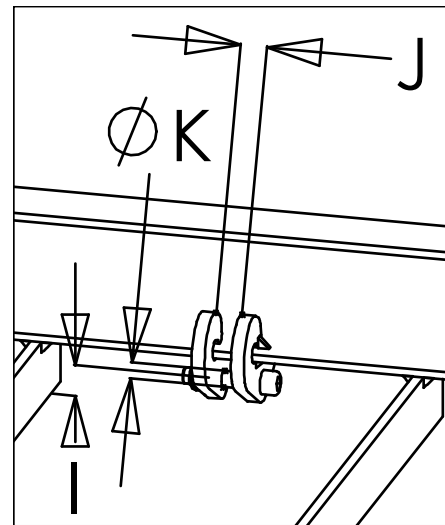
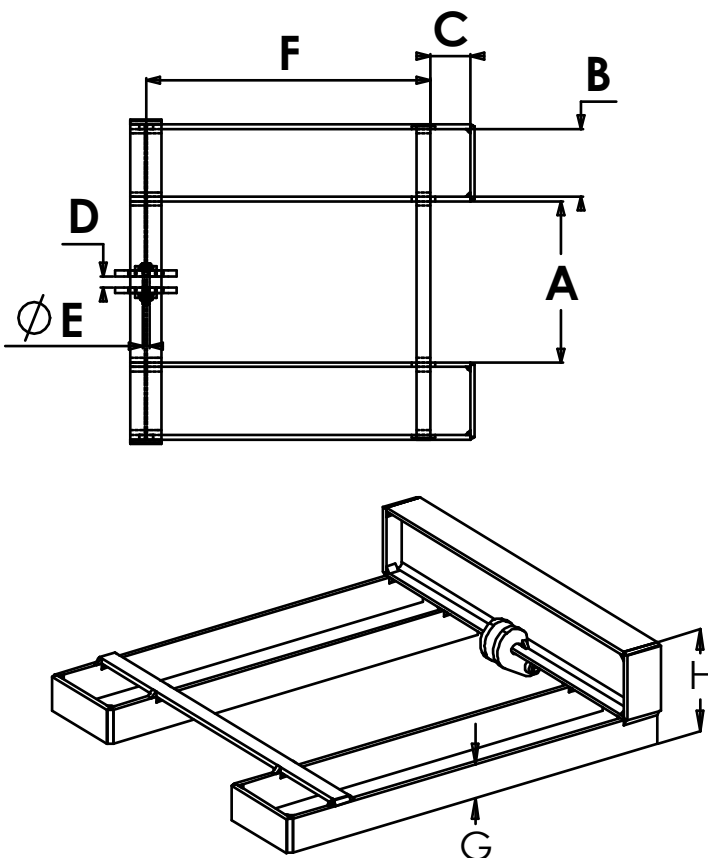
General characteristics

- Manufactured without load bearing welds.
- Hot epoxy coating.
- Safety factor: 3 in accordance with the EN 13155.2003 nom.
- Product conforms to the French regulation, in particular the decree of 01/03/2004 relating to the check on lifting devices and the European Directive n°98/37.
- Product with EC marking and delivered with a declaration of conformity and instructions for use.

Dimensional characteristics

Ref.	Group code	WLL kg	A	B	C	D	E	F	G	H	I	J	Ø K	Weight kg
PC1,5-120	50528	1 500	284	120	70	20	12	500	50	150	24	20	12	15
PC3-170	50538	3 000	484	170	80	22	16	600	50	170	18	22	16	23
CRE1.6	52338	1 500	HR swivel hook with safety catch											
CRE3.2	52368	3 200												

Dimensions in mm



Options on request

- Other lifting hook adaptator brackets.